

Country Data Report for TURKEY, 1996-2011

This Country Data Report summarizes the data from the Worldwide Governance Indicators (WGI) project for a single country. The WGI report six aggregate governance indicators for over 200 countries and territories over the period 1996-2011, covering i) Voice and Accountability, ii) Political Stability and Absence of Violence, iii) Government Effectiveness, iv) Regulatory Quality, v) Rule of Law, and vi) Control of Corruption.

The line graphs on each page show the country's percentile rank on each of the six governance indicators. Percentile ranks indicate the percentage of countries worldwide that rank lower than the indicated country, so that higher values indicate better governance scores. The line graphs include margins of error shown as dashed lines, corresponding to 90% confidence intervals. Changes over time in the aggregate scores that are small relative to these margins of error should not be interpreted as signalling a statistically significant change in the indicators.

The WGI are composite measures based on a large number of underlying data sources. The source data for each aggregate indicator are reported in a table on each page. Individual data sources have been rescaled to run from 0 (low) to 1 (high). These scores are comparable over time and across countries since most individual measures are based on similar methodologies over time. Scores from different individual indicators are not however directly comparable with each other since the different data sources use different units and cover different sets of countries. Not all data sources cover all countries, and cases where data are not available are reported as "..". For some sources and countries, the underlying source data is confidential and cannot be publicly disclosed at the request of the organizations producing the data. These cases are reported as "NP".

For a full description of the WGI methodology, and interactive data access, and downloads of the aggregate and individual indicators, please visit www.govindicators.org.

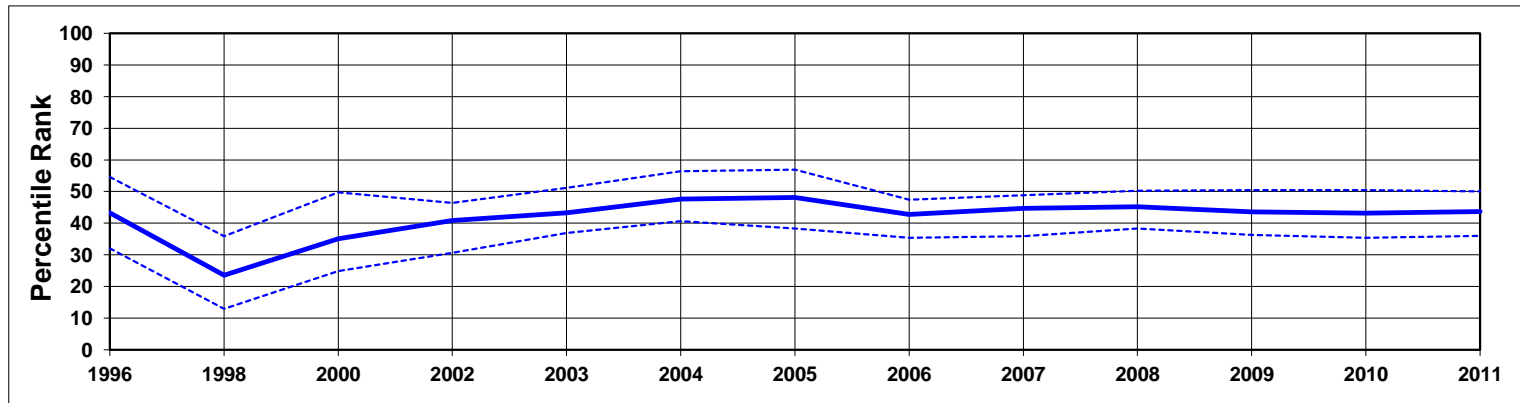
Disclaimer

The Worldwide Governance Indicators (WGI) are a research dataset summarizing the views on the quality of governance provided by a large number of enterprise, citizen and expert survey respondents in industrial and developing countries. These data are gathered from a number of survey institutes, think tanks, non-governmental organizations, international organizations, and private sector firms. The WGI do not reflect the official views of the World Bank, its Executive Directors, or the countries they represent. The WGI are not used by the World Bank Group to allocate resources.

Worldwide Governance Indicators

TURKEY, 1996-2011

Aggregate Indicator: Voice & Accountability



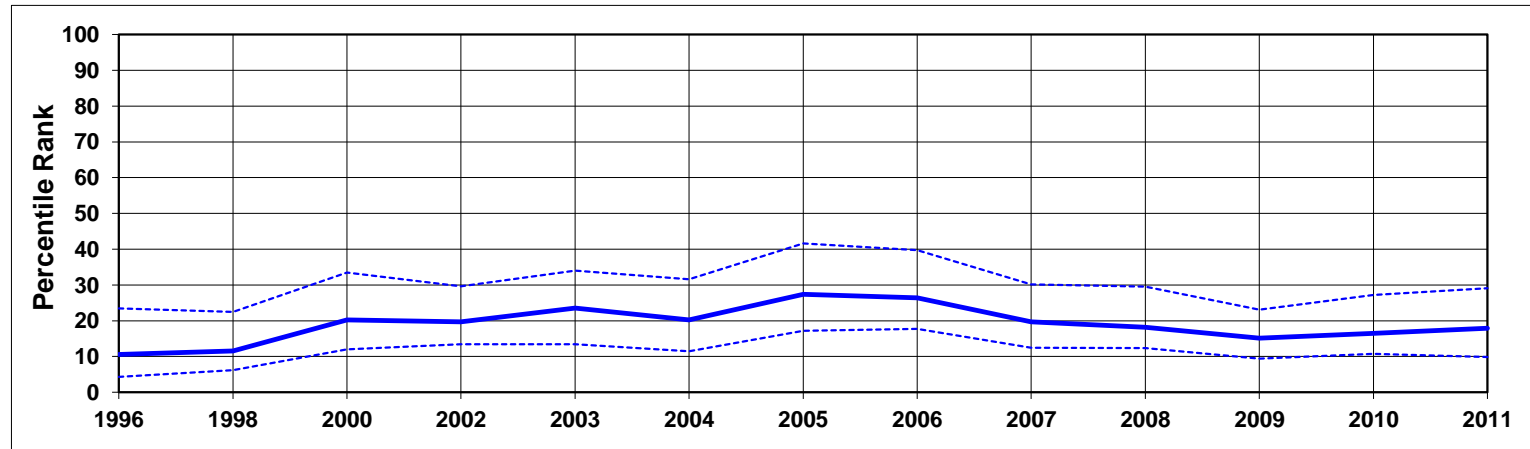
Individual Indicators used to construct Voice & Accountability

| Code | Source | Website | 1996 | 1998 | 2000 | 2002 | 2003 | 2004 | 2005 | 2006 | 2007 | 2008 | 2009 | 2010 | 2011 |
|------|-----------------------------------------------------------------------|---------------------------------------------------------------------------------------------------------------|------|------|------|------|------|------|------|------|------|------|------|------|------|
| AFR | Afrobarometer | http://www.afrobarometer.org | .. | .. | .. | .. | .. | .. | .. | .. | .. | .. | .. | .. | .. |
| BTI | Bertelsmann Transformation Index | http://www.bertelsmann-transformation-index.de/ | .. | .. | .. | 0.58 | 0.71 | 0.71 | 0.69 | 0.69 | 0.77 | 0.77 | 0.77 | 0.77 | 0.77 |
| CCR | Freedom House Countries at the Crossroads | http://www.freedomhouse.org | .. | .. | .. | .. | .. | 0.60 | 0.59 | 0.59 | 0.57 | 0.57 | 0.57 | 0.57 | 0.57 |
| EIU | Economist Intelligence Unit | http://www.eiu.com | 0.44 | 0.25 | 0.38 | 0.38 | 0.38 | 0.38 | 0.44 | 0.47 | 0.47 | 0.47 | 0.47 | 0.47 | 0.47 |
| FRH | Freedom House | http://www.freedomhouse.org | 0.39 | 0.38 | 0.42 | 0.54 | 0.55 | 0.62 | 0.62 | 0.61 | 0.61 | 0.61 | 0.61 | 0.60 | 0.59 |
| GCS | World Economic Forum Global Competitiveness Survey | http://www.weforum.org | .. | .. | 0.35 | 0.39 | 0.46 | 0.42 | 0.46 | 0.56 | 0.54 | 0.48 | 0.45 | 0.44 | 0.47 |
| GII | Global Integrity Index | http://www.globalintegrity.org/ | .. | .. | .. | .. | .. | .. | .. | .. | .. | 0.61 | 0.61 | 0.58 | 0.58 |
| GWP | Gallup World Poll | http://www.gallupworldpoll.com | .. | .. | .. | .. | .. | .. | .. | 0.48 | 0.44 | 0.47 | 0.47 | 0.37 | 0.50 |
| HUM | Cingranelli-Richards (CIRI) Human Rights Database | http://www.humanrightsdata.com | 0.50 | 0.31 | 0.06 | 0.38 | 0.25 | 0.31 | 0.25 | 0.31 | 0.31 | 0.19 | 0.25 | 0.25 | 0.25 |
| IFD | IFAD Rural Sector Performance Assessments | http://www.ifad.org | .. | .. | .. | .. | .. | 0.50 | 0.50 | 0.50 | 0.61 | 0.70 | 0.70 | 0.70 | 0.70 |
| IPD | Institutional Profiles Database | http://www.cepii.fr/ | .. | .. | .. | .. | .. | .. | .. | 0.64 | 0.64 | 0.64 | 0.60 | 0.60 | 0.60 |
| IRP | IREEP African Electoral Index | http://www.ireep.org | .. | .. | .. | .. | .. | .. | .. | .. | .. | .. | .. | .. | .. |
| LBO | Latinobarometro | http://www.latinobarometro.org | .. | .. | .. | .. | .. | .. | .. | .. | .. | .. | .. | .. | .. |
| MSI | IREX Media Sustainability Index | http://www.irex.org | .. | .. | .. | .. | .. | .. | .. | .. | .. | .. | .. | .. | .. |
| OBI | International Budget Project Open Budget Index | http://www.internationalbudget.org/ | .. | .. | .. | .. | .. | .. | 0.41 | 0.41 | 0.43 | 0.43 | 0.57 | 0.57 | 0.57 |
| PRS | Political Risk Services International Country Risk Guide | http://www.prsgroup.com | 0.67 | 0.25 | 0.58 | 0.38 | 0.75 | 0.79 | 0.79 | 0.67 | 0.58 | 0.58 | 0.58 | 0.54 | 0.50 |
| RSF | Reporters Without Borders Press Freedom Index | http://www.rsf.org | .. | .. | .. | 0.67 | 0.68 | 0.65 | 0.77 | 0.77 | 0.73 | 0.77 | 0.67 | 0.53 | 0.47 |
| VAB | Vanderbilt University Americas Barometer Survey | http://www.lapopsurveys.org | .. | .. | .. | .. | .. | .. | .. | .. | .. | .. | .. | .. | .. |
| WCY | Institute for management & development World Competitiveness Yearbook | http://www.imd.ch | 0.33 | 0.32 | 0.60 | 0.34 | 0.37 | 0.44 | 0.50 | 0.42 | 0.42 | 0.35 | 0.32 | 0.35 | 0.46 |
| WMO | Global Insight Business Conditions and Risk Indicators | http://www.globalinsight.com | 0.50 | 0.50 | 0.50 | 0.63 | 0.63 | 0.63 | 0.63 | 0.63 | 0.56 | 0.63 | 0.75 | 0.75 | 0.69 |

Worldwide Governance Indicators

TURKEY, 1996-2011

Aggregate Indicator: Political Stability and Absence of Violence



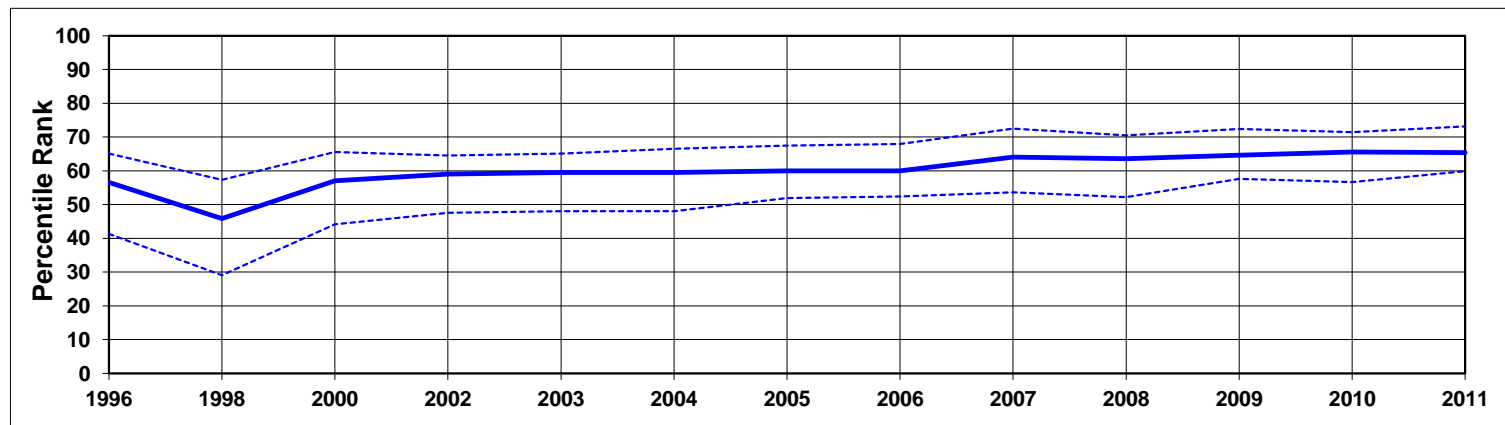
Individual Indicators used to construct Political Stability and Absence of Violence

| Code | Source | Website | 1996 | 1998 | 2000 | 2002 | 2003 | 2004 | 2005 | 2006 | 2007 | 2008 | 2009 | 2010 | 2011 |
|------|-----------------------------------------------------------------------|-----------------------------------------------------------------------------------------------|------|------|------|------|------|------|------|------|------|------|------|------|------|
| EIU | Economist Intelligence Unit | http://www.eiu.com | 0.40 | 0.30 | 0.45 | 0.25 | 0.30 | 0.40 | 0.50 | 0.55 | 0.50 | 0.45 | 0.55 | 0.50 | 0.45 |
| GCS | World Economic Forum Global Competitiveness Survey | http://www.weforum.org | .. | .. | .. | 0.60 | 0.65 | 0.62 | 0.65 | 0.60 | 0.66 | 0.63 | 0.53 | 0.54 | 0.51 |
| HUM | Cingranelli-Richards Human Rights Database & Political Terror Scale | http://www.humanrightsdata.com | 0.06 | 0.31 | 0.34 | 0.34 | 0.50 | 0.50 | 0.34 | 0.47 | 0.44 | 0.34 | 0.34 | 0.50 | 0.50 |
| IJT | iJET Country Security Risk Ratings | https://worldcue.ijet.com/tic/login.jsp | .. | .. | .. | .. | .. | 0.25 | 0.50 | 0.50 | 0.50 | 0.50 | 0.50 | 0.50 | 0.50 |
| IPD | Institutional Profiles Database | http://www.cepii.fr/ | .. | .. | .. | .. | .. | .. | .. | 0.61 | 0.61 | 0.61 | 0.42 | 0.42 | 0.42 |
| PRS | Political Risk Services International Country Risk Guide | http://www.prsgroup.com | 0.61 | 0.52 | 0.61 | 0.69 | 0.62 | 0.72 | 0.66 | 0.60 | 0.59 | 0.56 | 0.55 | 0.55 | 0.55 |
| WCY | Institute for management & development World Competitiveness Yearbook | http://www.imd.ch | .. | .. | 0.48 | 0.38 | 0.44 | 0.50 | 0.60 | 0.56 | 0.48 | 0.48 | 0.50 | 0.44 | 0.68 |
| WMO | Global Insight Business Conditions and Risk Indicators | http://www.globalinsight.com | 0.56 | 0.56 | 0.63 | 0.69 | 0.56 | 0.51 | 0.56 | 0.56 | 0.50 | 0.56 | 0.56 | 0.56 | 0.50 |

Worldwide Governance Indicators

TURKEY, 1996-2011

Aggregate Indicator: Government Effectiveness

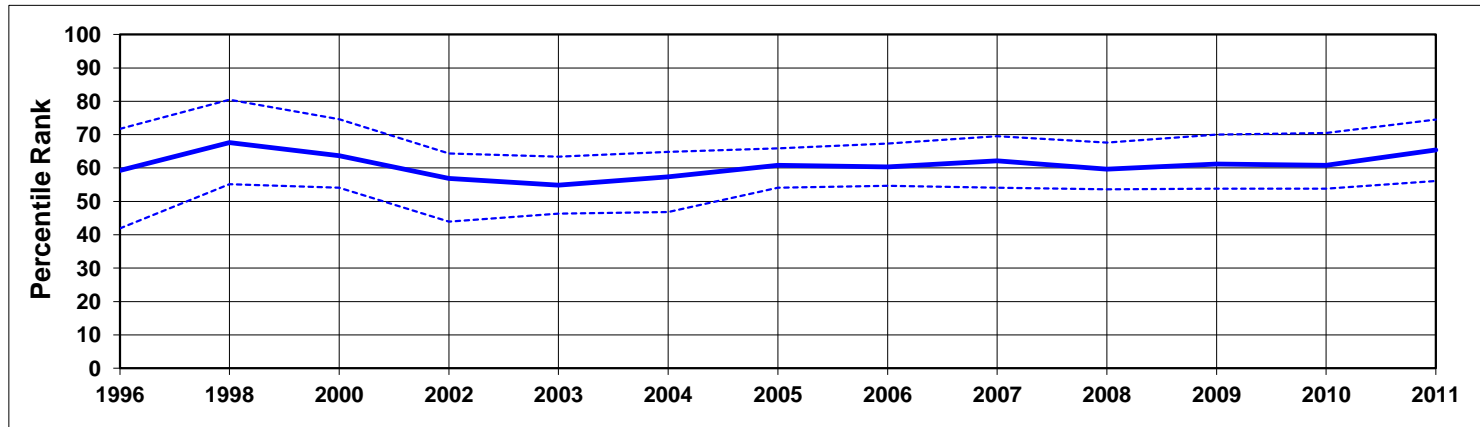


Individual Indicators used to construct Government Effectiveness

| Code | Source | Website | 1996 | 1998 | 2000 | 2002 | 2003 | 2004 | 2005 | 2006 | 2007 | 2008 | 2009 | 2010 | 2011 |
|------|-----------------------------------------------------------------------|---------------------------------------------------------------------------------------------------------------|------|------|------|------|------|------|------|------|------|------|------|------|------|
| ADB | African Development Bank Country Policy and Institutional Assessments | http://cpia.afdb.org/About.aspx | .. | .. | .. | .. | .. | .. | .. | .. | .. | .. | .. | .. | .. |
| AFR | Afrobarometer | http://www.afrobarometer.org | .. | .. | .. | .. | .. | .. | .. | .. | .. | .. | .. | .. | .. |
| ASD | Asian Development Bank Country Policy and Institutional Assessments | http://www.adb.org/ | .. | .. | .. | .. | .. | .. | .. | .. | .. | .. | .. | .. | .. |
| BPS | Business Enterprise Environment Survey | http://www.worldbank.org/eca/governance | .. | .. | 0.58 | 0.71 | 0.71 | 0.71 | 0.76 | 0.76 | 0.76 | 0.75 | 0.75 | 0.75 | 0.75 |
| BTI | Bertelsmann Transformation Index | http://www.bertelsmann-transformation-index.de/ | .. | .. | .. | 0.63 | 0.72 | 0.72 | 0.73 | 0.73 | 0.74 | 0.74 | 0.75 | 0.75 | 0.75 |
| EIU | Economist Intelligence Unit | http://www.eiu.com | 0.25 | 0.13 | 0.38 | 0.25 | 0.25 | 0.25 | 0.25 | 0.38 | 0.38 | 0.38 | 0.38 | 0.38 | 0.38 |
| GCS | World Economic Forum Global Competitiveness Survey | http://www.weforum.org | 0.55 | 0.42 | 0.40 | 0.42 | 0.37 | 0.35 | 0.39 | 0.38 | 0.48 | 0.39 | 0.52 | 0.54 | 0.56 |
| GWP | Gallup World Poll | http://www.gallupworldpoll.com | .. | .. | .. | .. | .. | .. | .. | 0.48 | 0.57 | 0.57 | 0.57 | 0.66 | 0.56 |
| IFD | IFAD Rural Sector Performance Assessments | http://www.ifad.org | .. | .. | .. | .. | .. | 0.63 | 0.63 | 0.63 | 0.70 | 0.75 | 0.75 | 0.75 | 0.75 |
| IPD | Institutional Profiles Database | http://www.cepii.fr/ | .. | .. | .. | .. | .. | .. | .. | 0.53 | 0.53 | 0.53 | 0.56 | 0.56 | 0.56 |
| LBO | Latinobarometro | http://www.latinobarometro.org | .. | .. | .. | .. | .. | .. | .. | .. | .. | .. | .. | .. | .. |
| PIA | World Bank Country Policy and Institutional Assessments | http://www.worldbank.org | .. | NP | NP | NP | NP | NP | NP | NP | NP | NP | NP | NP | NP |
| PRS | Political Risk Services International Country Risk Guide | http://www.prsgroup.com | 0.75 | 0.50 | 0.50 | 0.50 | 0.50 | 0.50 | 0.50 | 0.50 | 0.50 | 0.50 | 0.50 | 0.50 | 0.50 |
| WCY | Institute for management & development World Competitiveness Yearbook | http://www.imd.ch | 0.43 | 0.37 | 0.47 | 0.42 | 0.42 | 0.46 | 0.51 | 0.47 | 0.47 | 0.47 | 0.45 | 0.47 | 0.59 |
| WMO | Global Insight Business Conditions and Risk Indicators | http://www.globalinsight.com | 0.50 | 0.50 | 0.50 | 0.63 | 0.69 | 0.63 | 0.69 | 0.69 | 0.69 | 0.69 | 0.69 | 0.69 | 0.69 |

TURKEY, 1996-2011

Aggregate Indicator: Regulatory Quality



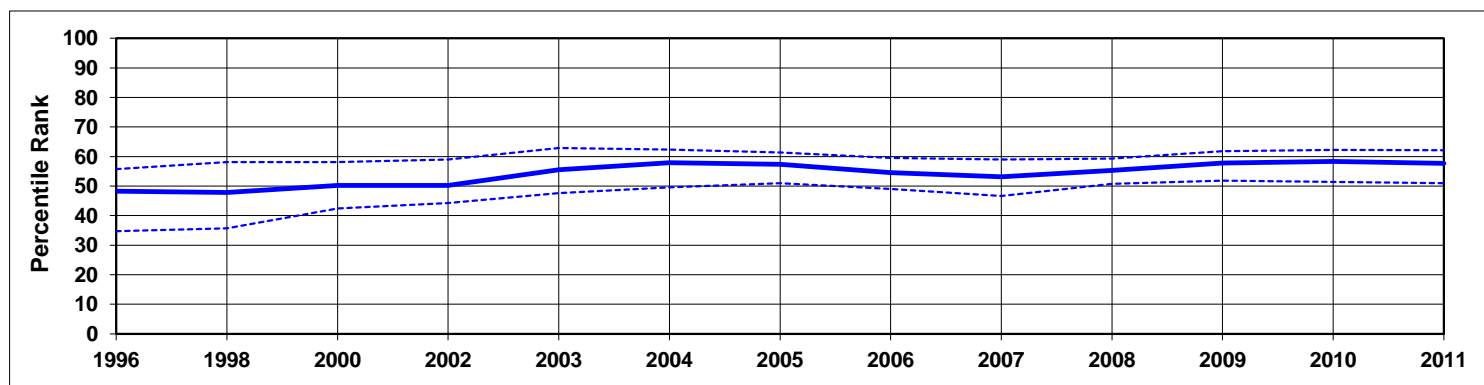
Individual Indicators used to construct Regulatory Quality

| Code | Source | Website | 1996 | 1998 | 2000 | 2002 | 2003 | 2004 | 2005 | 2006 | 2007 | 2008 | 2009 | 2010 | 2011 |
|------|-----------------------------------------------------------------------|---------------------------------------------------------------------------------------------------------------|------|------|------|------|------|------|------|------|------|------|------|------|------|
| ADB | African Development Bank Country Policy and Institutional Assessments | http://cpia.afdb.org/About.aspx | .. | .. | .. | .. | .. | .. | .. | .. | .. | .. | .. | .. | .. |
| ASD | Asian Development Bank Country Policy and Institutional Assessments | http://www.adb.org/ | .. | .. | .. | .. | .. | .. | .. | .. | .. | .. | .. | .. | .. |
| BPS | Business Enterprise Environment Survey | http://www.worldbank.org/eca/governance | .. | .. | 0.58 | 0.63 | 0.63 | 0.63 | 0.65 | 0.65 | 0.65 | 0.75 | 0.75 | 0.75 | 0.75 |
| BTI | Bertelsmann Transformation Index | http://www.bertelsmann-transformation-index.de/ | .. | .. | .. | 0.75 | 0.70 | 0.70 | 0.80 | 0.80 | 0.85 | 0.85 | 0.85 | 0.85 | 0.85 |
| EBR | European Bank for Reconstruction & Development Transition Report | http://www.ebrd.org | .. | .. | .. | .. | .. | .. | .. | .. | .. | .. | 0.67 | 0.67 | 0.69 |
| EIU | Economist Intelligence Unit | http://www.eiu.com | 0.50 | 0.50 | 0.50 | 0.55 | 0.55 | 0.55 | 0.55 | 0.55 | 0.55 | 0.55 | 0.55 | 0.55 | 0.55 |
| GCS | World Economic Forum Global Competitiveness Survey | http://www.weforum.org | 0.43 | 0.57 | 0.48 | 0.39 | 0.41 | 0.51 | 0.50 | 0.53 | 0.55 | 0.51 | 0.53 | 0.55 | 0.53 |
| HER | Heritage Foundation Index of Economic Freedom | http://www.heritage.org | 0.70 | 0.70 | 0.60 | 0.50 | 0.50 | 0.40 | 0.50 | 0.50 | 0.50 | 0.50 | 0.58 | 0.60 | 0.65 |
| IFD | IFAD Rural Sector Performance Assessments | http://www.ifad.org | .. | .. | .. | .. | .. | 0.62 | 0.62 | 0.62 | 0.67 | 0.69 | 0.69 | 0.69 | 0.69 |
| IPD | Institutional Profiles Database | http://www.cepii.fr/ | .. | .. | .. | .. | .. | .. | .. | 0.56 | 0.56 | 0.56 | 0.51 | 0.51 | 0.51 |
| PIA | World Bank Country Policy and Institutional Assessments | http://www.worldbank.org | .. | NP | NP | NP | NP | NP | NP | NP | NP | NP | NP | NP | NP |
| PRS | Political Risk Services International Country Risk Guide | http://www.prsgroup.com | 0.36 | 0.64 | 0.82 | 0.59 | 0.59 | 0.64 | 0.64 | 0.64 | 0.64 | 0.59 | 0.59 | 0.59 | 0.59 |
| WCY | Institute for management & development World Competitiveness Yearbook | http://www.imd.ch | 0.63 | 0.58 | 0.61 | 0.52 | 0.51 | 0.50 | 0.56 | 0.58 | 0.56 | 0.59 | 0.60 | 0.58 | 0.64 |
| WMO | Global Insight Business Conditions and Risk Indicators | http://www.globalinsight.com | 0.50 | 0.50 | 0.50 | 0.63 | 0.63 | 0.61 | 0.69 | 0.69 | 0.69 | 0.63 | 0.63 | 0.63 | 0.63 |

Worldwide Governance Indicators

TURKEY, 1996-2011

Aggregate Indicator: Rule of Law



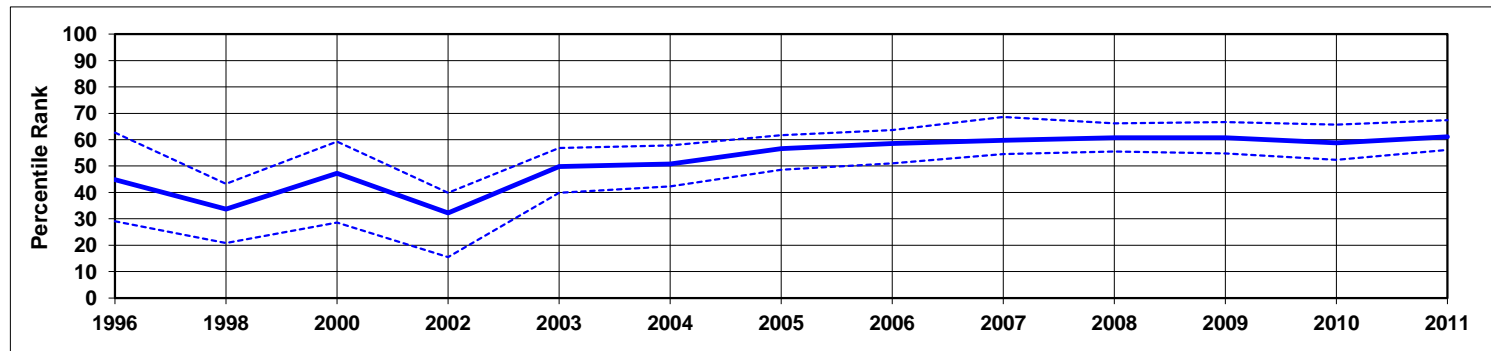
Individual Indicators used to construct Rule of Law

| Code | Source | Website | 1996 | 1998 | 2000 | 2002 | 2003 | 2004 | 2005 | 2006 | 2007 | 2008 | 2009 | 2010 | 2011 |
|------|-----------------------------------------------------------------------|---------------------------------------------------------------------------------------------------------------|------|------|------|------|------|------|------|------|------|------|------|------|------|
| ADB | African Development Bank Country Policy and Institutional Assessments | http://cpia.afdb.org/About.aspx | .. | .. | .. | .. | .. | .. | .. | .. | .. | .. | .. | .. | .. |
| AFR | Afrobarometer | http://www.afrobarometer.org | .. | .. | .. | .. | .. | .. | .. | .. | .. | .. | .. | .. | .. |
| ASD | Asian Development Bank Country Policy and Institutional Assessments | http://www.adb.org/ | .. | .. | .. | .. | .. | .. | .. | .. | .. | .. | .. | .. | .. |
| BPS | Business Enterprise Environment Survey | http://www.worldbank.org/eca/governance | .. | .. | 0.48 | 0.55 | 0.55 | 0.55 | 0.61 | 0.61 | 0.61 | 0.64 | 0.64 | 0.64 | 0.64 |
| BTI | Bertelsmann Transformation Index | http://www.bertelsmann-transformation-index.de/ | .. | .. | .. | 0.50 | 0.63 | 0.63 | 0.70 | 0.70 | 0.73 | 0.73 | 0.77 | 0.77 | 0.77 |
| CCR | Freedom House Countries at the Crossroads | http://www.freedomhouse.org | .. | .. | .. | .. | .. | 0.55 | 0.57 | 0.57 | 0.56 | 0.56 | 0.56 | 0.56 | 0.56 |
| EIU | Economist Intelligence Unit | http://www.eiu.com | 0.41 | 0.38 | 0.47 | 0.53 | 0.53 | 0.53 | 0.53 | 0.53 | 0.53 | 0.53 | 0.50 | 0.50 | 0.50 |
| FRH | Freedom House | http://www.freedomhouse.org | .. | .. | .. | .. | .. | .. | .. | .. | .. | .. | .. | .. | .. |
| GCS | World Economic Forum Global Competitiveness Survey | http://www.weforum.org | 0.52 | 0.55 | 0.46 | 0.52 | 0.55 | 0.46 | 0.46 | 0.51 | 0.56 | 0.50 | 0.46 | 0.48 | 0.48 |
| GII | Global Integrity Index | http://www.globalintegrity.org/ | .. | .. | .. | .. | .. | .. | .. | .. | .. | 0.53 | 0.53 | 0.48 | 0.48 |
| GWP | Gallup World Poll | http://www.gallupworldpoll.com | .. | .. | .. | .. | .. | .. | .. | 0.69 | 0.76 | 0.76 | 0.76 | 0.75 | 0.70 |
| HER | Heritage Foundation Index of Economic Freedom | http://www.heritage.org | 0.70 | 0.70 | 0.70 | 0.50 | 0.50 | 0.50 | 0.50 | 0.50 | 0.50 | 0.50 | 0.50 | 0.50 | 0.50 |
| HUM | Cingranelli-Richards (CIRI) Human Rights Database | http://www.humanrightsdata.com | 0.50 | 0.50 | 0.50 | 0.50 | 0.50 | 0.50 | 0.50 | 0.50 | 0.00 | 0.00 | 0.00 | 0.50 | 0.50 |
| IFD | IFAD Rural Sector Performance Assessments | http://www.ifad.org | .. | .. | .. | .. | .. | 0.64 | 0.64 | 0.64 | 0.66 | 0.78 | 0.78 | 0.78 | 0.78 |
| IPD | Institutional Profiles Database | http://www.cepii.fr/ | .. | .. | .. | .. | .. | .. | .. | 0.36 | 0.36 | 0.36 | 0.53 | 0.53 | 0.53 |
| LBO | Latinobarometro | http://www.latinobarometro.org | .. | .. | .. | .. | .. | .. | .. | .. | .. | .. | .. | .. | .. |
| PIA | World Bank Country Policy and Institutional Assessments | http://www.worldbank.org | .. | NP | NP | NP | NP | NP | NP | NP | NP | NP | NP | NP | NP |
| PRS | Political Risk Services International Country Risk Guide | http://www.prsgroup.com | 0.67 | 0.67 | 0.67 | 0.67 | 0.75 | 0.75 | 0.75 | 0.75 | 0.75 | 0.75 | 0.75 | 0.58 | 0.58 |
| TPR | US State Department Trafficking in People report | http://www.state.gov/g/tip/rls/tiprpt | .. | .. | 0.00 | 0.00 | 0.33 | 0.67 | 0.67 | 0.67 | 0.67 | 0.67 | 0.67 | 0.67 | 0.67 |
| VAB | Vanderbilt University Americas Barometer Survey | http://www.lapopsurveys.org | .. | .. | .. | .. | .. | .. | .. | .. | .. | .. | .. | .. | .. |
| WCY | Institute for management & development World Competitiveness Yearbook | http://www.imd.ch | 0.43 | 0.40 | 0.48 | 0.40 | 0.40 | 0.38 | 0.44 | 0.36 | 0.37 | 0.44 | 0.43 | 0.40 | 0.44 |
| WMO | Global Insight Business Conditions and Risk Indicators | http://www.globalinsight.com | 0.50 | 0.50 | 0.50 | 0.50 | 0.63 | 0.64 | 0.63 | 0.63 | 0.63 | 0.63 | 0.63 | 0.63 | 0.56 |

Worldwide Governance Indicators

TURKEY, 1996-2011

Aggregate Indicator: Control of Corruption



Individual Indicators used to construct Control of Corruption

| Code | Source | Website | 1996 | 1998 | 2000 | 2002 | 2003 | 2004 | 2005 | 2006 | 2007 | 2008 | 2009 | 2010 | 2011 |
|------|-----------------------------------------------------------------------|---------------------------------------------------------------------------------------------------------------|------|------|------|------|------|------|------|------|------|------|------|------|------|
| ADB | African Development Bank Country Policy and Institutional Assessments | http://cpia.afdb.org/About.aspx | .. | .. | .. | .. | .. | .. | .. | .. | .. | .. | .. | .. | .. |
| AFR | Afrobarometer | http://www.afrobarometer.org | .. | .. | .. | .. | .. | .. | .. | .. | .. | .. | .. | .. | .. |
| ASD | Asian Development Bank Country Policy and Institutional Assessments | http://www.adb.org/ | .. | .. | .. | .. | .. | .. | .. | .. | .. | .. | .. | .. | .. |
| BPS | Business Enterprise Environment Survey | http://www.worldbank.org/eca/governance | .. | .. | 0.39 | 0.73 | 0.73 | 0.73 | 0.80 | 0.80 | 0.80 | 0.79 | 0.79 | 0.79 | 0.79 |
| BTI | Bertelsmann Transformation Index | http://www.bertelsmann-transformation-index.de/ | .. | .. | .. | .. | 0.55 | 0.55 | 0.55 | 0.55 | 0.60 | 0.60 | 0.65 | 0.65 | 0.65 |
| CCR | Freedom House Countries at the Crossroads | http://www.freedomhouse.org | .. | .. | .. | .. | .. | 0.50 | 0.52 | 0.52 | 0.52 | 0.52 | 0.52 | 0.52 | 0.52 |
| EIU | Economist Intelligence Unit | http://www.eiu.com | 0.25 | 0.00 | 0.00 | 0.00 | 0.00 | 0.00 | 0.00 | 0.25 | 0.25 | 0.25 | 0.25 | 0.25 | 0.25 |
| FRH | Freedom House | http://www.freedomhouse.org | .. | .. | .. | .. | .. | .. | .. | .. | .. | .. | .. | .. | .. |
| GCB | Transparency International Global Corruption Barometer Survey | http://www.transparency.org | .. | .. | .. | .. | .. | 0.61 | 0.61 | 0.61 | 0.64 | 0.69 | 0.68 | 0.59 | 0.59 |
| GCS | World Economic Forum Global Competitiveness Survey | http://www.weforum.org | 0.46 | 0.57 | 0.48 | 0.35 | 0.41 | 0.47 | 0.49 | 0.57 | 0.58 | 0.49 | 0.46 | 0.47 | 0.47 |
| GII | Global Integrity Index | http://www.globalintegrity.org/ | .. | .. | .. | .. | .. | .. | .. | .. | .. | 0.53 | 0.53 | 0.53 | 0.53 |
| GWP | Gallup World Poll | http://www.gallupworldpoll.com | .. | .. | .. | .. | .. | .. | .. | 0.35 | 0.35 | 0.43 | 0.43 | 0.38 | 0.49 |
| IFD | IFAD Rural Sector Performance Assessments | http://www.ifad.org | .. | .. | .. | .. | .. | 0.56 | 0.56 | 0.56 | 0.62 | 0.60 | 0.60 | 0.60 | 0.60 |
| IPD | Institutional Profiles Database | http://www.cepii.fr/ | .. | .. | .. | .. | .. | .. | .. | 0.33 | 0.33 | 0.33 | 0.42 | 0.42 | 0.42 |
| LBO | Latinobarometro | http://www.latinobarometro.org | .. | .. | .. | .. | .. | .. | .. | .. | .. | .. | .. | .. | .. |
| PIA | World Bank Country Policy and Institutional Assessments | http://www.worldbank.org | .. | NP | NP | NP | NP | NP | NP | NP | NP | NP | NP | NP | NP |
| PRC | Political Economic Risk Consultancy Corruption in Asia | http://www.asiarisk.com/ | .. | .. | .. | .. | .. | .. | .. | .. | .. | .. | .. | .. | .. |
| PRS | Political Risk Services International Country Risk Guide | http://www.prsgroup.com | 0.33 | 0.33 | 0.50 | 0.33 | 0.42 | 0.42 | 0.42 | 0.42 | 0.42 | 0.42 | 0.42 | 0.42 | 0.42 |
| VAB | Vanderbilt University Americas Barometer Survey | http://www.lapopsurveys.org | .. | .. | .. | .. | .. | .. | .. | .. | .. | .. | .. | .. | .. |
| WCY | Institute for management & development World Competitiveness Yearbook | http://www.imd.ch | 0.33 | 0.21 | 0.26 | 0.23 | 0.24 | 0.24 | 0.33 | 0.27 | 0.29 | 0.31 | 0.30 | 0.29 | 0.37 |
| WMO | Global Insight Business Conditions and Risk Indicators | http://www.globalinsight.com | 0.38 | 0.38 | 0.50 | 0.50 | 0.63 | 0.59 | 0.63 | 0.63 | 0.63 | 0.63 | 0.63 | 0.63 | 0.63 |